

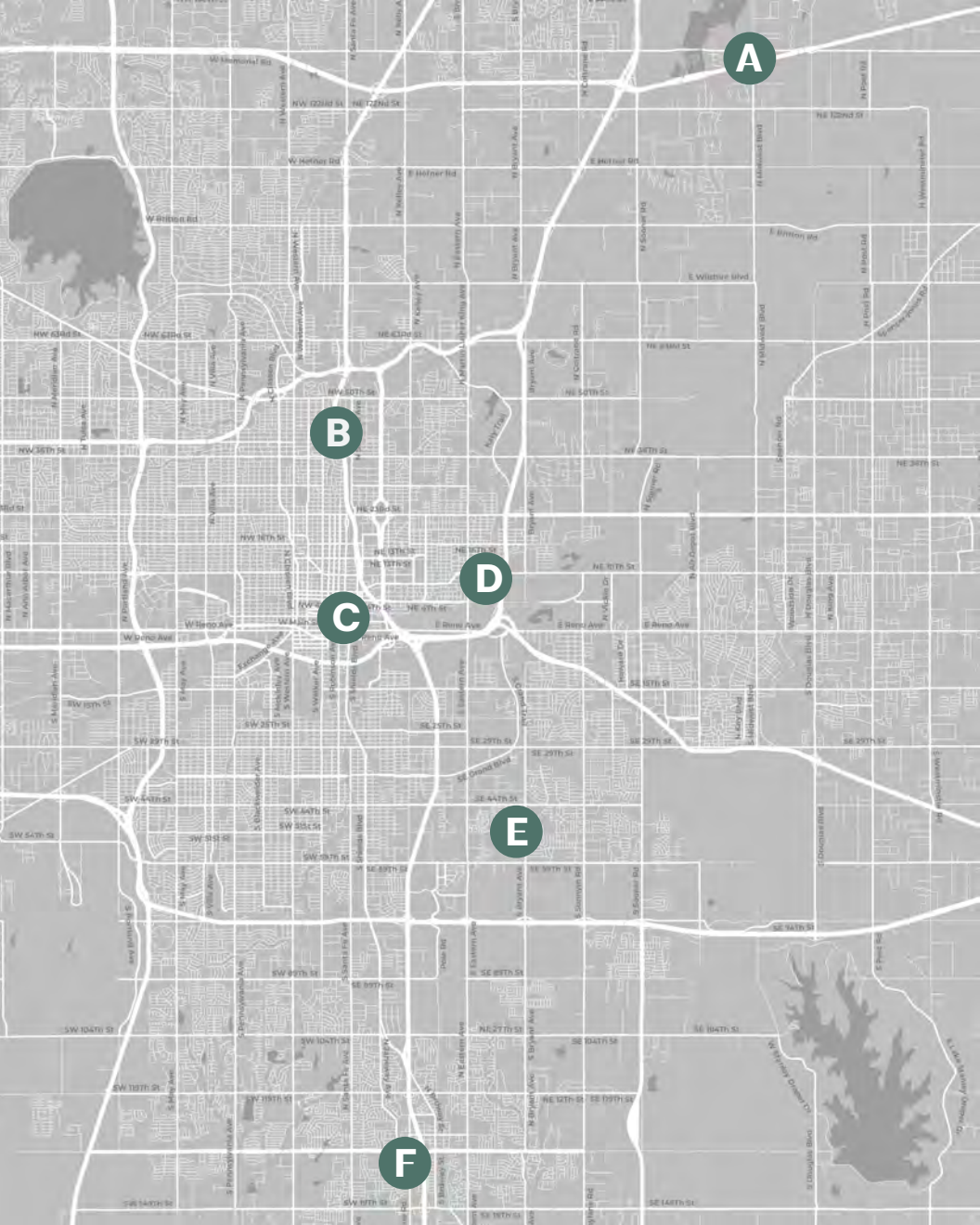
# AIA Architecture

APRIL 13, 2024

Tour

## ARCHITECTURE TOUR GUIDEBOOK





- A** - Galt Residence
- B** - Templeton Residence
- C** - Boyett Petroleum
- D** - Willa D. Johnson Recreation Center
- E** - Metro Tech Safety Center
- F** - First United Bank of Moore



April 13, 2024

Dear Architecture Tour Enthusiast:

Welcome to our 23rd Annual Architecture Tour!

The American Institute of Architects is a national, professional organization that supports the architectural profession and serves the community through good design and care for the built environment. Nationally there are more than 96,000 members while the Central Oklahoma Chapter has nearly 500 members. We are committed to serving the community by promoting excellence in the built environment through quality architecture and educating the community of its importance.

The AIA Architecture Tour is part of Architecture Week. Architecture Week is an opportunity to celebrate architecture and to promote the importance of our built environment. The tour highlights both residential and commercial projects and you will have the opportunity to meet and visit with the architects of the projects.

Again, welcome to the tour and thank you for your support. Please remember to visit our website at [aiacoc.org](http://aiacoc.org) for information on upcoming events and activities. Should you have questions or want to become involved in our organization, please feel free to contact me at 405-948-7174 or by email at [melissa@aiacoc.org](mailto:melissa@aiacoc.org).

**Enjoy the tour!**

**Melissa Hunt, Hon. AIA  
Executive Director**

**AIA Central Oklahoma**  
 2220 N. Classen Boulevard, Suite A  
 Oklahoma City, OK 73106  
 405.948.7174  
 www.aiacoc.org



# GALT RESIDENCE

13501 NORTH MIDWEST BOULEVARD  
JONES, OK

OWNER	GALT ORMISTON
ARCHITECT	GOLDY, RYAN FOGLE, AIA
CONTRACTOR	GALT LANDSCAPE

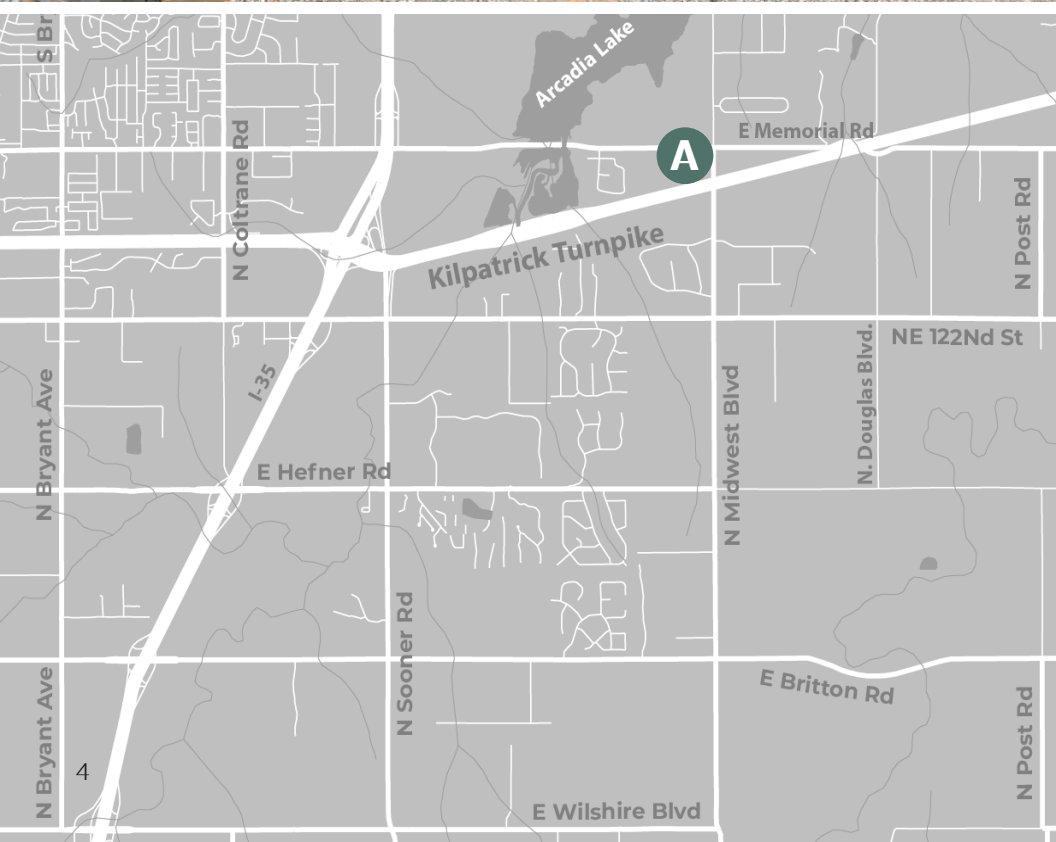
Discover the timeless beauty of sustainable architecture with a rammed earth house. Nestled within the serene landscape just south of Lake Arcadia, this eco-friendly dwelling seamlessly blends modern design with ancient building techniques. Crafted from locally sourced materials, the walls of this home are formed by compressing layers of earth to create a strong and energy-efficient structure.

This house highlights the importance of handcrafted elements with the rich textures and earthy striations of rammed earth, enhanced on the interior by the natural light filtering through strategically placed windows. An open floor plan which allows for a seamless flow between living spaces. High ceilings and thoughtful architectural details create a sense of spaciousness and tranquility.

Sustainable features, such as passive solar design and natural ventilation, further enhance the eco-conscious ethos of the home. Outside, a future courtyard and swimming pool will offer a private oasis for relaxation and contemplation. Native landscaping and drought-tolerant plants complement the natural surroundings, while outdoor living areas will provide ample space for entertaining and enjoying the beauty of the outdoors. Whether you're a design enthusiast, an eco-conscious homeowner, or simply seeking inspiration, our rammed earth house promises to captivate and inspire.

\*\*\* This location has a rock driveway that can create an uneven walkway to up to the home. Shoe booties may be required.

\*\*\* We recommend using google maps to get to this location. Apple maps will take you to the wrong location.





# TEMPLETON RESIDENCE

4120 NORTH HARVEY PARKWAY  
OKLAHOMA CITY

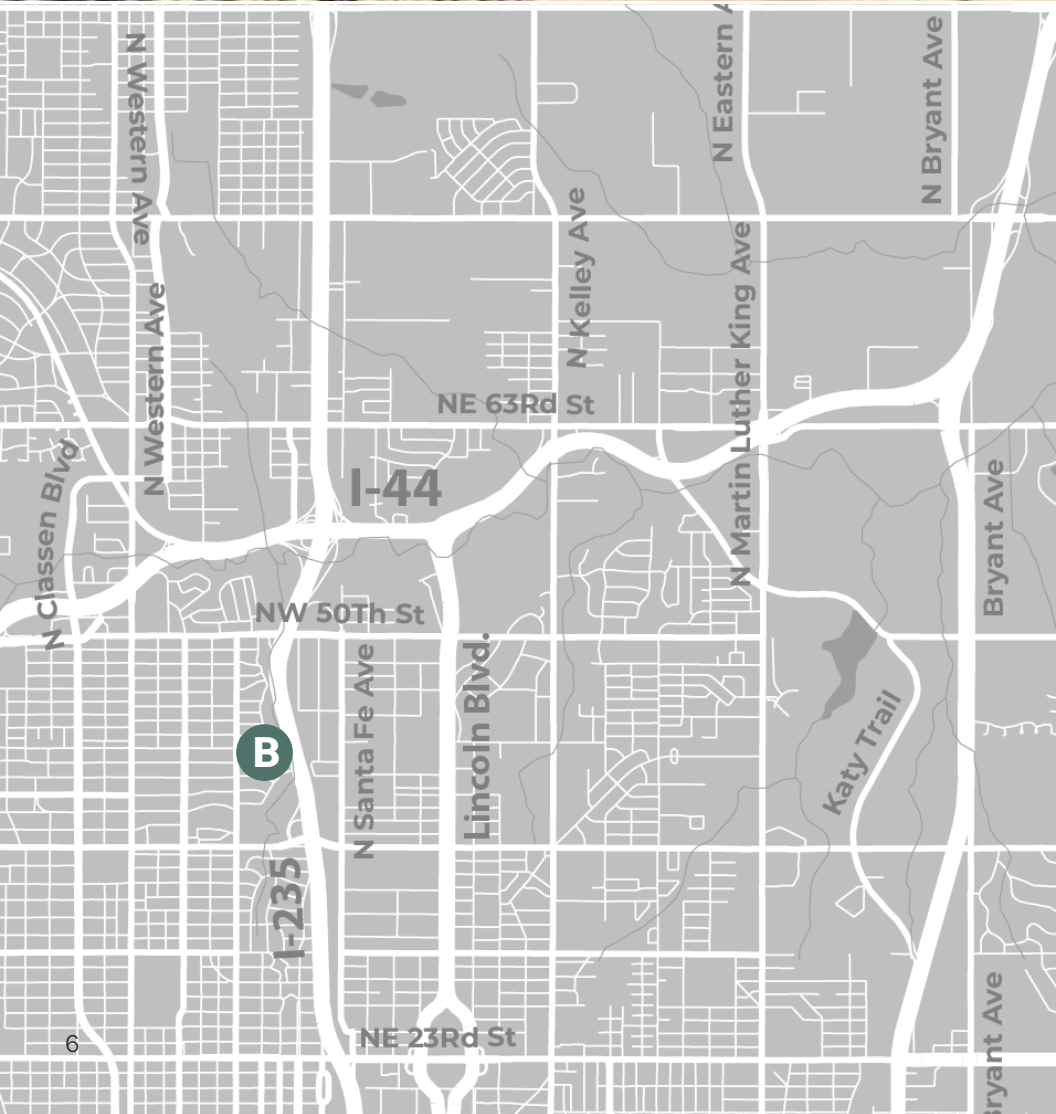
OWNER | MIKE AND DANA TEMPLETON  
ARCHITECT | DANA TEMPLETON, AIA

Located in the eastern most portion of Edgemere Heights, the Templeton residence was built in 1966 and boasts 2,246 SF of space. The stone exterior, hipped roof and slightly angled garage present a strong mid-century modern feel.

The floor plan has a large open space in the central part of the home, with two bedrooms, both with on-suites restrooms, at opposing ends of the house. Sliding doors, adjacent to each other, allow for an abundance of natural light to flood both the kitchen and the living/dining areas. A large wood paneled wall, which hides a bar, storage and access to a three-season room, is the focal point of the living room along with the limestone fireplace with a black metal hood having a distinct mid-century modern style.

The original brick pavers in the kitchen and carpet in the living/dining areas have been replaced with a white concrete floor. The walnut cabinets with burnt orange countertops have been updated but have retained a nod to the mid-century feel, with stranded cherry lower cabinets and white painted uppers. A modern metal divider delineates the entry from the kitchen, but leaves a visual connection which maintains the feel of an open space. The floor plan and the large sliding doors create a flow through the house and to the patio that is inviting and makes the house feel larger than it really is. The yard has also been rethought with a modern fence, sidewalks and new landscaping.

\*\*\* Shoe booties may be required at this location.

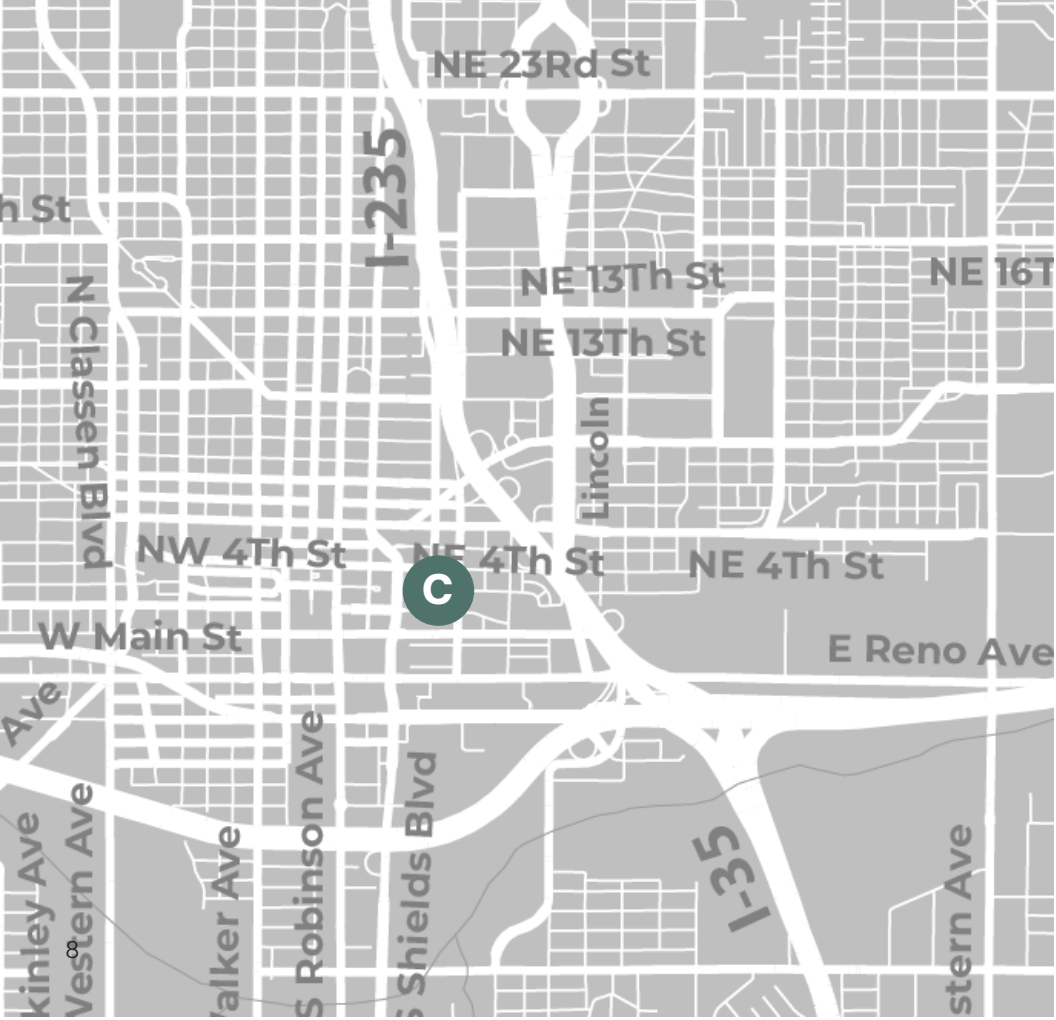




# BOYETT PETROLEUM OKC HEADQUARTERS

123 E. MAIN STREET  
OKLAHOMA CITY

OWNER	BOYETT PETROLEUM
ARCHITECT	TAP ARCHITECTURE
CONTRACTOR	LINGO CONSTRUCTION



Boyett Petroleum's new Oklahoma headquarters joins a 1920s three-story brick warehouse to a 1940s Quonset hut. The brick building was severely damaged when new piers were driven for the new Walnut Bridge in the early 2000s. Afterwards the buildings were considered by most to be a lost cause.

Dale Boyett fell in love with the buildings and had a dream of restoring them into a showcase for his company. TAP Architecture and Lingo Construction Services were tasked with carrying out Dale's vision to breathe new life into these buildings.

The Quonset hut is now transformed into a dramatic light-filled space that leads into the office building. A steel skeleton was built inside the 1920s warehouse to stabilize the structure and support a new glass penthouse. The basement was cleared of dead cats and the dirt floor replaced with a new concrete floor to house the IT department.

This incredible act of preservation and conservation of Oklahoma City history is a testimony to what can be done with a lofty vision and ample resources. As a visitor you will be transported through a unique spatial experience starting at the unassuming front door and highlighted with skyline views of Bricktown from the glass penthouse.



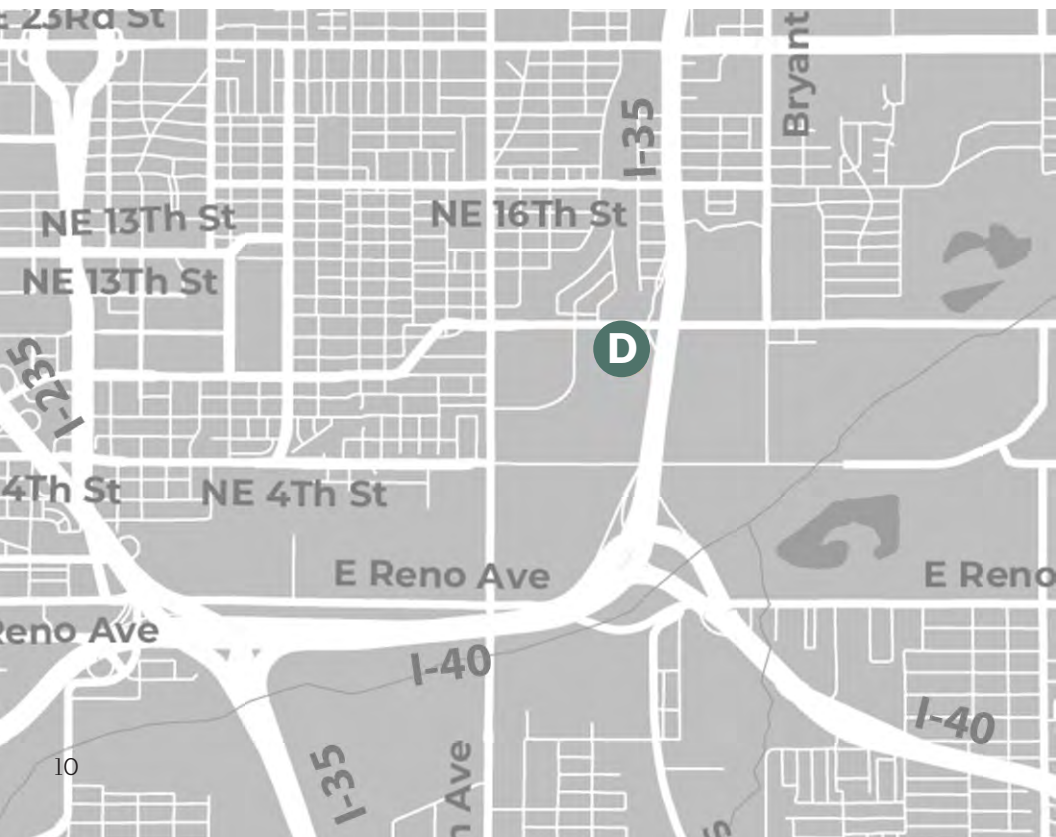
# WILLA D. JOHNSON RECREATION CENTER

909 FREDERICK DOUGLAS AVENUE  
OKLAHOMA CITY

OWNER	CITY OF OKLAHOMA CITY
ARCHITECT	FSB ARCHITECTS + ENGINEERS
CONTRACTOR	W.L. McNATT & COMPANY

The recent completion of this facility marks the first new recreation center for the City of Oklahoma City in over 50 years. FSB teamed with BRS Architects to plan and design this new multi-generational center that showcases a welcoming and inviting design while also integrating into the surrounding community.

With high visibility off northeast 10th Street, the building offers views and natural lighting throughout the interior, and the surrounding park received an upgrade with new walkways and overall landscape enhancement. This much-needed recreational center provides a community gathering space for local residents and the nearby Douglass High School. With indoor and outdoor spaces for everyone, features include basketball courts, walking/jogging track, classroom space, multi-use space, office space and a natatorium.





# METRO TECHNOLOGY CENTERS PUBLIC SAFETY ACADEMY

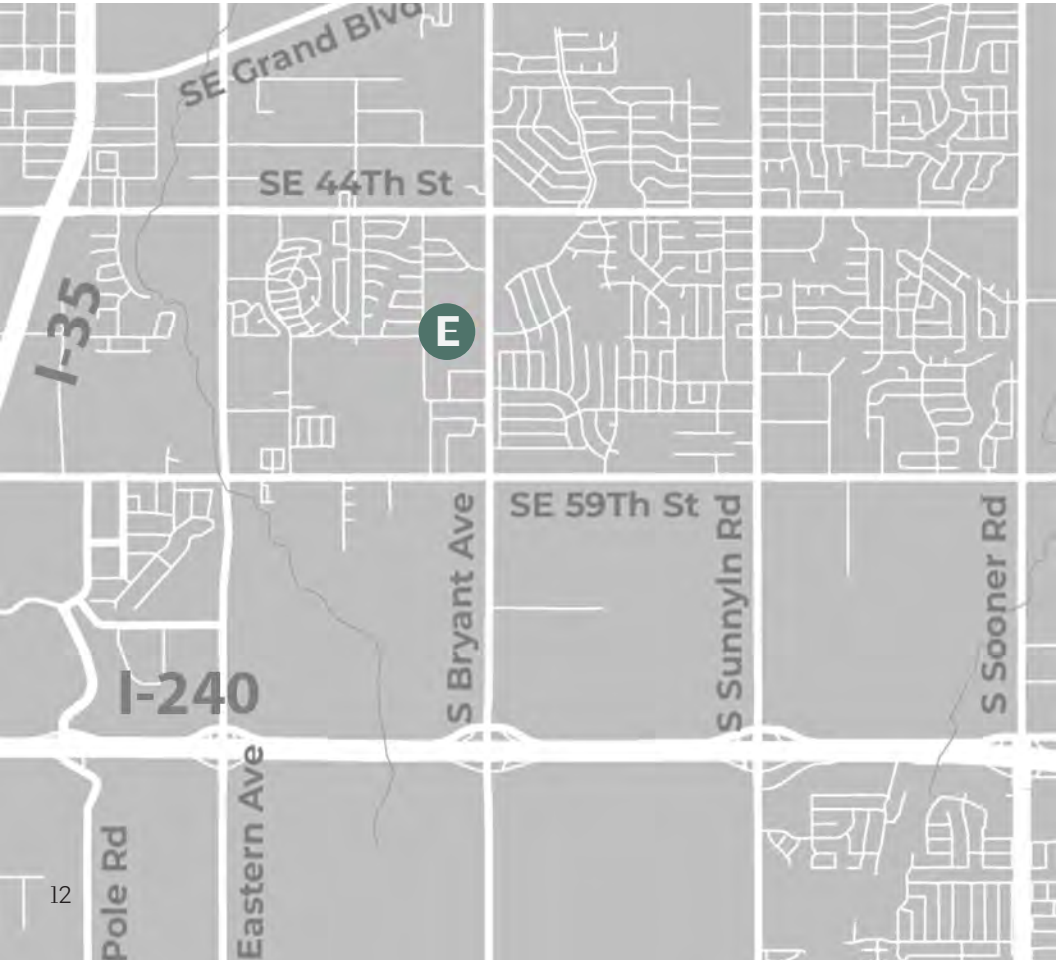
S. BRYANT CAMPUS, 4901 S. BRYANT AVE.  
OKLAHOMA CITY

OWNER	METRO TECHNOLOGY CENTERS
ARCHITECT	RENAISSANCE ARCHITECTURE, LLC
CONTRACTOR	QUAD CONSTRUCTION (formerly Smith & Pickel Construction)

The Public Safety Academy, a 56,000 square foot state-of-the-art facility, was launched by Metro Technology Centers to revolutionize public safety education. In collaboration with Renaissance Architecture and Quad Construction, Metro Tech established a cutting-edge institution for the training of first responder professionals including Peace Officers, Firefighters, EMSA personnel, 911 Dispatchers, and Security Experts. To ensure exceptional training, Metro Tech partnered with Oklahoma County Law Enforcement, the Oklahoma City Fire Department, EMSA, and the Oklahoma 911 Management Authority. This \$15.8 million facility, constructed as part of the 2019 Community Bond initiative, highlights Metro Tech's commitment to preparing individuals for successful careers and life in a global society.

The Public Safety Academy features an advanced high bay training area with suspended catwalks for instructor observation during emergency simulations, a cadaver lab for medical practice, ambulance simulator, multi-vehicle apparatus bay, and expansive exterior paved surface for vehicular training. Its secure entrances, check-in room, and vestibule are accompanied by specialized classrooms and defensive tactics training areas. The facility also includes simulated driving and shooting classrooms and a simunitions training area to provide a comprehensive learning experience. Two FEMA-rated storm shelters are housed within the facility; one serving as a faculty breakroom and the other as the 4,100 square foot Oklahoma County Sherriff's Office 911 Dispatch Center that accommodates 16 call officials and serves as a training ground for emergency dispatch personnel. Additionally, a dedicated fitness space, dining areas, a fully equipped kitchen, and an inviting outdoor patio enhance the overall offerings of the academy.

Metro Tech's Public Safety Academy is a testament to innovation and collaboration in creating spaces and resources that support the next generation of highly skilled public safety professionals committed to protecting our communities.





# FIRST UNITED BANK OF MOORE

420 SW 6TH STREET  
MOORE, OK

OWNER	FIRST UNITED BANK
ARCHITECT	GENSLER
CONTRACTOR	LIPPERT BROS., INC.

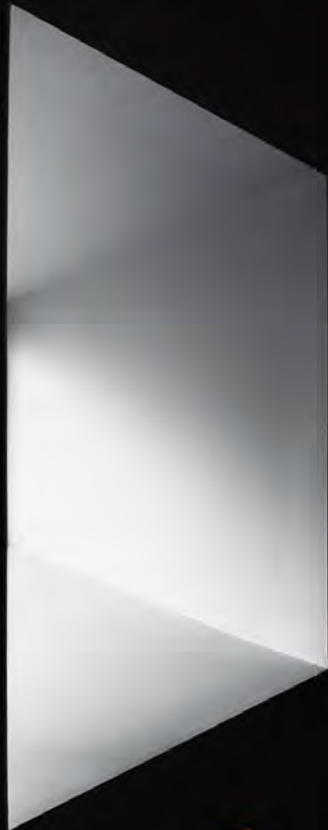
The First United Bank recently opened its doors to a stunning new building in Moore. Designed by Gensler, a global architecture firm, the building creates a welcoming space that supports the comfort and well-being of all occupants, all the while being sustainable and timeless. These design goals help the building embody one of First United Bank's key values of serving the community.

The two-story, 43,000-square-foot building is constructed using a glulam and cross-laminated timber structure with a stone and glass curtain wall building envelope. In keeping with the owner's community focused programming, the building features an expansive banking lobby, business offices, lounge areas, two large conference spaces that will be available for both the bank staff and customers within the community, and a large storm shelter space. Outside, there are expansive balconies, a large plaza, and drive-thru banking lanes.





# THE INFLUENCE OF LIGHT AND SHADOW



405.348.3636 BELLANDMCCOY.COM  
719 N SHARTEL, OKLAHOMA CITY, 73102



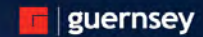
Darr & Collins, LLC Consulting Engineers is a regional leader in the design of mechanical, plumbing and electrical systems for buildings, central plants and with a focus on design-build projects. We have the experience and construction knowledge to provide timely delivery to cost-conscious and time-conscious projects.

MECHANICAL

ELECTRICAL

PLUMBING

1425 NW 150TH STREET  
EDMOND, OK. 73013  
WWW.DARRCOLLINS.COM  
(405) 285-2400



## Architecture Engineering Consulting

405.416.8100 | [guernsey.us](http://guernsey.us)

dedicated to  
**the art of possibility.**



wallace  
design  
collective

structural · civil · landscape · survey  
[wallace.design](http://wallace.design)





# The Document Centre

## ESTABLISHED COMMERCIAL PRINTER

The Document Centre is a locally owned print company. We have been in business since March of 2000.

We offer a variety of services. If you do not see something on the list, just ask! Chances are we can do it.

333 W. Wilshire Blvd., Suite C  
Oklahoma City, OK 73116  
repro@copydude.com  
405.879.1101

### LIST OF SERVICES

- Architectural / Engineering Prints - B&W / Redline / Full Color
- Plotter Paper
- Scanning
- Laminating
- Foam Core Mounting
- Book Binding Comb / Spiral / Wire
- Brochures
- Business Cards
- Checks
- Design Services
- Digital/Offset Printing
- Envelopes
- Letterhead
- Notepads
- Postcards
- Posters & Banners
- Promotional Products
- NCR (Carbonless Copies) Invoices / Ticket Books / Work orders

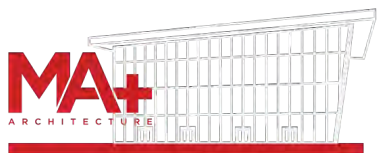


*Designing Industry-Leading  
Structural Solutions  
Into the Next Half Century*

kfcengr.com | 405.528.4596



**Proud Sponsor of  
AIA CENTRAL OKLAHOMA CHAPTER**



# Designing a Greater Oklahoma Together

MAPLUSARCH.COM

**CROSSLAND**  
CONSTRUCTION COMPANY, INC.



**BUILDING MORE!**  
*go north*

405-748-5043  
www.crossland.com  
X f @ in YouTube

Lighting For Architecture



Smith Lighting  
www.smithlighting.com

## Architecture Tour

### 2024 TOUR COMMITTEE

**Jason Cady, AIA**  
Mass Architects

**Anne-Marie Funk, FSMPS, CPSM**  
Guernsey

**Justin Mitchell, AIA**  
MA+ Architecture

**Branson Young, AIA**  
JHBR Architecture

## Designing Excellence in Central Oklahoma



ARCHITECTS + ENGINEERS  
www.fsb-ae.com

ThinBRIK™ from Acme adds charm to every project inside and out.

ThinBRIK is adhered to the wall and finished with real mortar. Installation is fast and simple. Beautiful ThinBRIK is available in any Acme face brick color. Visit [brick.com/thinbrik](http://brick.com/thinbrik) or contact your representative.

Discover the flexibility of Acme's new TC Cladding panels in sizes up to 16" x 48" in 15 colors. Visit [acmetcladding.com](http://acmetcladding.com).



405-525-7421 | [brick.com/Oklahomacity](http://brick.com/Oklahomacity)

LOOKING FORWARD TO THE NEXT 75 YEARS OF  
*advancing Oklahoma's construction industry*



With 75 years of serving our communities, Nabholz knows we're not just building facilities — we're building futures. We're proud to work with clients in almost every aspect of commercial facility management, including maintenance services, industrial machinery transportation and installation, infrastructure, energy and solar services, and more.

LOOKING FORWARD SINCE 1949

405.979.4400 | nabholz.com



Discover the **Pella** Difference

537 E. Britton Road  
 (405) 478-4350  
 www.PellaOKC.com

Explore with us

**terracon**

- Facilities
- Environmental
- Geotechnical
- Materials

Contact Your Navigator (405) 525-0453

Terracon.com/Oklahoma-City

**HLPS** HOSSLEY  
 LIGHTING AND POWER SOLUTIONS

www.hossleylps.com

HLPS is an electrical solutions company with a broad portfolio of electrical products for all commercial, industrial, and residential needs.

**BOLDT**  
 BUILD BOLDLY

Moore Public Schools  
 Southmoore College and Career Center

Norman Public Schools  
 Adams Elementary

At Boldt, we develop and build the extraordinary. From straightforward to complex, our focus goes beyond building great things.

Achieving visions. Championing ideas. Shaping communities. Strengthening lives.

Our work is about more than what we build. It's bringing together extraordinary people, places and ideas to blaze new trails and improve tomorrow's landscape. It's helping the world **build boldly** for another 135 years.

101 W. HEFNER ROAD, OKC, OK 73114 | BOLDT.COM | 406-752-5885 **BOLDT**

**HP ENGINEERING**

MECHANICAL ▲ ELECTRICAL ▲ PLUMBING ▲ STRUCTURAL

PROUDLY NATIVE AMERICAN-OWNED

Designing building systems that enhance the quality of life.

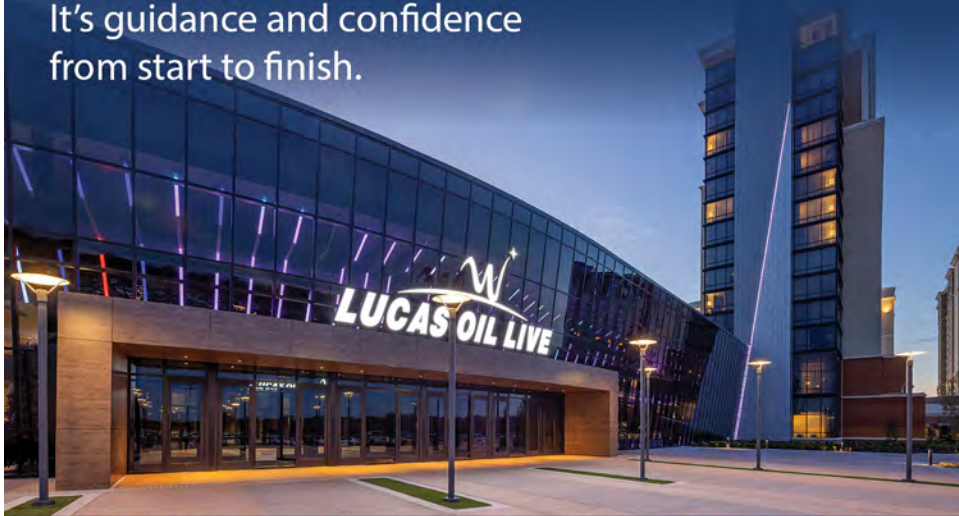
405.286.9945  
 hpengineeringinc.com

**MILLER-TIPPENS**  
 CONSTRUCTION

Our owner driven team ensures the success of our projects and a near 100% customer retention rate.

**miller-tippens.com**

Our Builder-Driven®  
Preconstruction Service  
is more than just estimating.  
It's guidance and confidence  
from start to finish.



manhattanconstructiongroup.com | Office: (405) 254-1050 | Fax: (405) 254-1055

olsson.com



olsson®



Most see a skyline.  
We see endless potential.

**ENGINEERING  
POSSIBILITIES.**

 **TRIPLE C LIGHTING**  
— & CONTROLS —



**BUILD  
OKLAHOMA  
WITH US**



**PROUD SUPPORTER OF AIA**

THANK YOU TO OUR BRONZE SPONSORS!



**TIMBERLAKE CONSTRUCTION** Always Building.

QR Code

OKC Office:  
405-840-2521  
Tulsa Office:  
918-998-0887

**NATIVE WRECKING AND DEMOLITION**

[nativewrecking.com](http://nativewrecking.com)

Oklahoma's most trusted Native American-owned demolition company.

**TAP ARCHITECTURE**

Our vision is simple, seek to make a difference by doing work that matters.

tapokc.com | 405. 232. 8787  
415 N Broadway Avenue, OKC

**SPUR**  
spur-design.com

DISCOVER SOLUTIONS IN THE WILDERNESS OF POSSIBILITY.

- ARCHITECTURE
- INTERIOR DESIGN
- MEP ENGINEERING
- TELECOMMUNICATIONS
- VERTICAL TRANSPORTATION
- COST ESTIMATING
- CONSTRUCTION ADMINISTRATION

OKLAHOMA CITY, OK | TEMPE, AZ  
KANSAS CITY, MO | LOUISVILLE, KY

**FORM2LIGHT**  
lighting & controls  
A PREMIER LIGHTING GROUP COMPANY

[www.premier-ltg.com](http://www.premier-ltg.com)

(405) 416-5500  
[quotes@form2light.com](mailto:quotes@form2light.com)

**SCHEMMER**  
Architecture + Engineering

[www.schemmer.com](http://www.schemmer.com)

THANK YOU TO OUR  
BRONZE SPONSORS!

fitzsimmons  
architects



**JHBR**  
architecture



**sa.**studio

## 2024 AIA GOLF TOURNAMENT

MONDAY, MAY 6  
RIVER OAKS  
GOLF CLUB

8:00 AM &  
1:30 PM

[aiacoc.org](http://aiacoc.org)



**Renaissance**  
ARCHITECTURE, LLC

Architectural Services  
Inspiring Community Pride

[renaissancearchitecture.com](http://renaissancearchitecture.com)

**PEC**

Oklahoma City  
405.735.8939

Tulsa  
918.664.5400

pec1.com

Professional Engineering Consultants

**A|C|OWEN**  
CONSTRUCTION

[ac-owen.com](http://ac-owen.com)

**Willowbrook**  
CONSTRUCTION SERVICES



[willowbrook.build](http://willowbrook.build)  
OKLAHOMA CITY • TULSA • CHICKASHA



**BURGESS  
COMPANY**

OKLAHOMA'S "SPECIALTY" CONTRACTOR

[www.burgess-co.com](http://www.burgess-co.com)



**Central Oklahoma**  
A Chapter of The American Institute of Architects

**AIA Central Oklahoma**  
**BOARD OF DIRECTORS**

**PRESIDENT**

Justin Mitchell, AIA  
 MA+ Architecture

**PRESIDENT-ELECT**

Bethany Jackson, AIA  
 Spur Design

**PAST PRESIDENT**

Gary Armbruster, AIA  
 MA+ Architecture

**TREASURER**

Clay Dobbins, AIA  
 TAP Architecture

**SECRETARY**

Audrey Wise, AIA  
 FSB Architects + Engineers

**EMERGING PROFESSIONAL DIRECTOR**

Kelsee Watts, Assoc. AIA  
 Larson Design Group

**DIRECTORS**

Jacob Beebe, AIA  
 Allford Hall Monaghan Morris

**ASSOCIATE DIRECTOR**

Donovan Linsey, Assoc. AIA  
 Studio Architecture

Branson Young, AIA  
 JHBR Architecture

**PUBLIC DIRECTOR**

Anne-Marie Funk, FSMPS, CPSM  
 Guernsey

Drew Mitchell, AIA  
 New Fire Native Design Group

**EXECUTIVE DIRECTOR**

Melissa Hunt, Hon. AIA  
 AIA Central Oklahoma

**TIMELESS TREASURES**

A Look at OKC's American House Styles



okcarchitecture.com

Tuesday, April 16  
 5:30 - 6:30 p.m.  
 NW 18th & Barnes

**OKC**



OCFA Members: Free | Nonmembers: \$10

**OKLAHOMANMADE**

ARCHITECTURE PHOTOGRAPHY EXHIBIT

APRIL 17TH | 5:00- 6:30 PM | OCFA OFFICE  
[www.okcarchitecture.com](http://www.okcarchitecture.com)



Image by Ryan Fogle, AIA  
 1st Place image in 2019



**SAVE THE DATE!**



**ICONIC ARCHITECTURE**  
 looking back, moving forward



**AIA Oklahoma**

**2024 AIA OKLAHOMA CONFERENCE ON ARCHITECTURE**

**OCTOBER 24-25, 2024**  
 THE CENTER | BARTLESVILLE, OK

**FRIDAY NIGHT FEVER**  
**AIA AWARDS CELEBRATION**

APRIL **19** 6:00 PM

PETROLEUM CLUB  
 100 N. BROADWAY, 34TH FLOOR

TICKETS: \$150 per person | \$1200 table of 8  
 Sponsorships Available

aiacoc.org **AIA**



# Thank you to our Architecture Week Sponsors!

## **PLATINUM SPONSORS:**

BELL & MCCOY LIGHTING  
TRIPLE C LIGHTING

## **GOLD SPONSORS:**

ACME BRICK  
KFC ENGINEERING  
MANHATTAN CONSTRUCTION  
NABHOLZ CONSTRUCTION  
OLSSON  
PREMIER LIGHTING SALES  
SMITH LIGHTING

## **SILVER SPONSORS:**

AC OWEN CONSTRUCTION  
THE BOLDT COMPANY  
BURGESS COMPANY  
CROSSLAND CONSTRUCTION COMPANY  
DARR COLLINS CONSULTING ENGINEERS  
FORM2LIGHT  
FSB  
GUERNSEY  
HOSSLEY LIGHTING  
HP ENGINEERING  
MA+ ARCHITECTURE  
MILLER TIPPENS CONSTRUCTION  
NATIVE WRECKING  
PEC  
PELLA WINDOWS & DOORS  
QUAD CONSTRUCTION  
RENAISSANCE ARCHITECTURE  
SCHEMMER ARCHITECTURE + ENGINEERING  
SPUR DESIGN  
TAP ARCHITECTURE  
TERRACON  
THE DOCUMENT CENTRE  
TIMBERLAKE CONSTRUCTION  
WALLACE DESIGN COLLECTIVE  
WILLOWBROOK CONSTRUCTION SERVICES

## **BRONZE SPONSORS:**

360 ENGINEERING	JE DUNN CONSTRUCTION
BEST COMPANIES	JHBR ARCHITECTS
CEC	ROAM STUDIO
CLS LANDSCAPE ARCHITECTS	ROOFING SYSTEM SOLUTIONS
DIGITAL MEDIA WAREHOUSE	SA.STUDIO
ECS	STANDARD FIELD SERVICES
FITZSIMMONS ARCHITECTS	THERMAL WINDOWS.
FLINTCO	TOPOGRAPHIC
HALFF	ZFI ENGINEERING